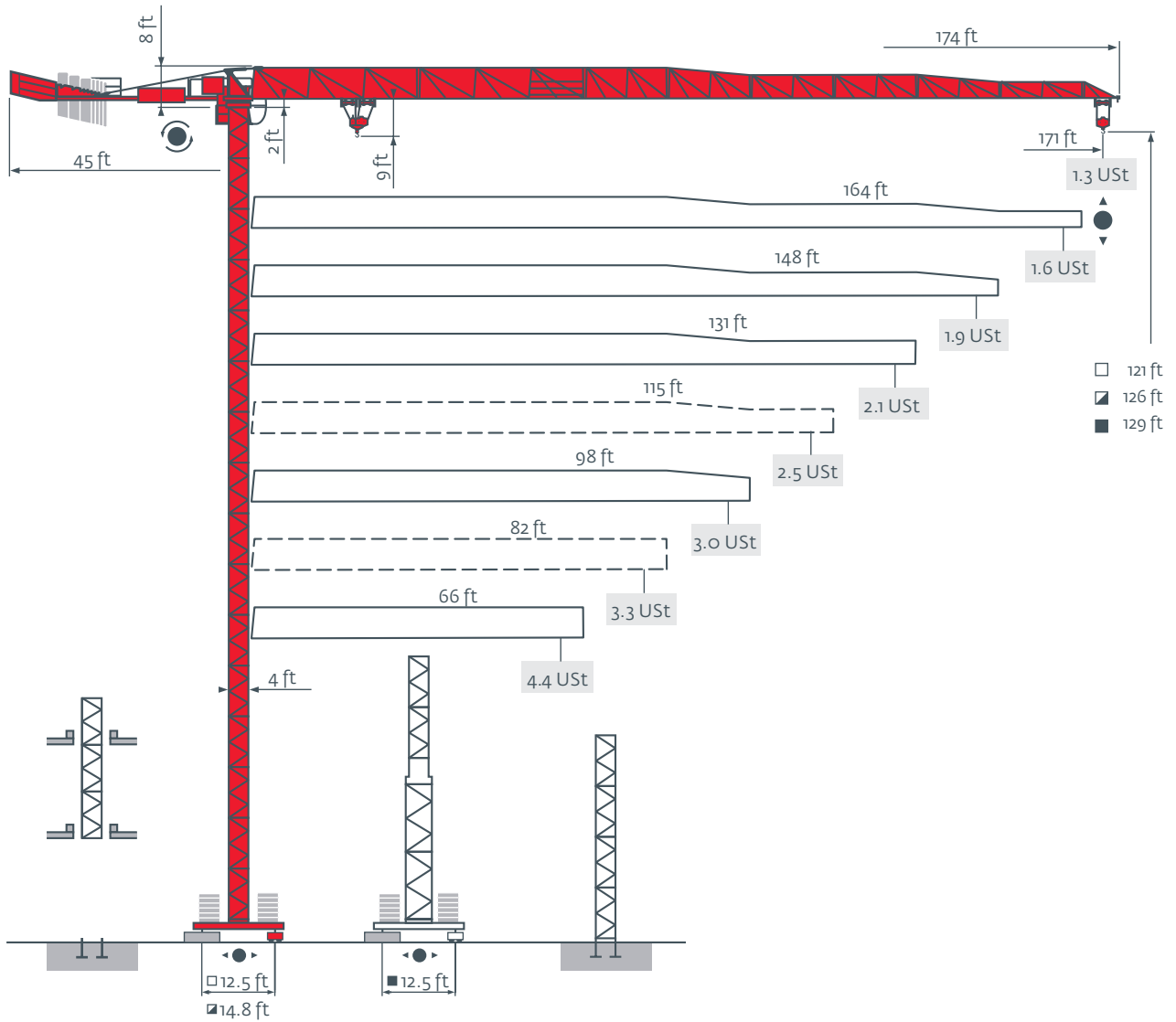
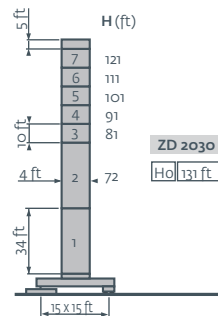
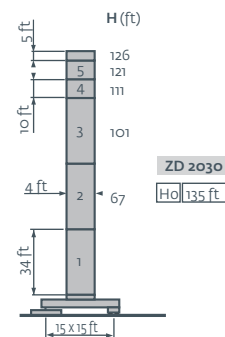
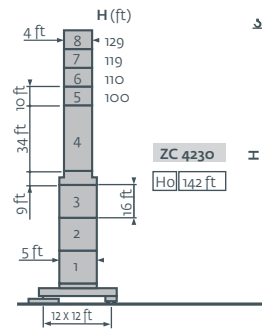
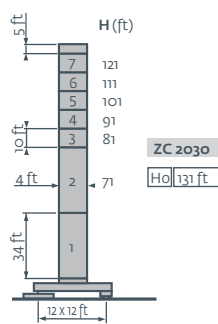
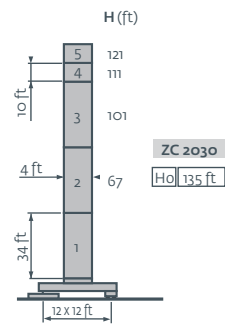
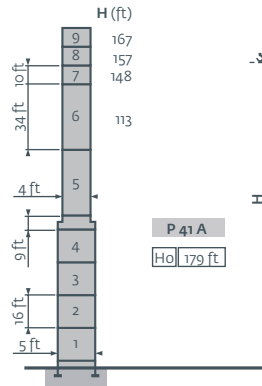
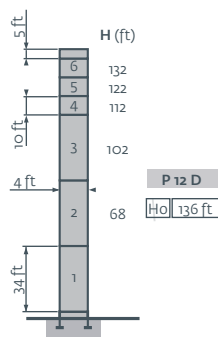
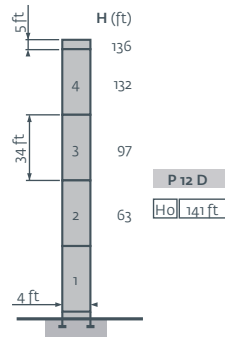
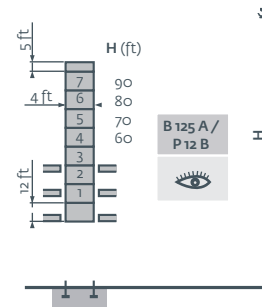
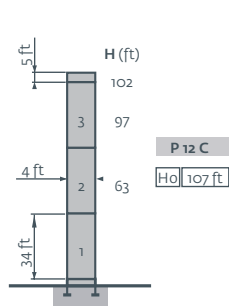


# Potain MCT 88

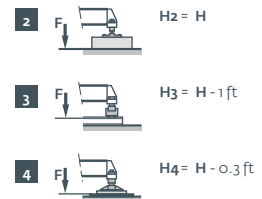


Masts / Reactions

4 ft  
66 ft → 171 ft



ZC 2030 - ZC 4230 - ZD 2030



City Topless  
MCT 88

Potain



Ho

**F**

Réactions en service  
Réactions hors service  
A vide sans lest (ni train de transport) avec flèche et hauteur maximum.

H sans cabine

**D**

Reaktionskräfte in Betrieb  
Reaktionskräfte außer Betrieb  
Ohne Last, Ballast (und Transportachse), mit Maximalausleger und Maximalhöhe.  
H Ohne Fahrerhaus

**GB**

Reactions in service  
Reactions out of service  
Without load, ballast (or transport axes), with maximum jib and maximum height.  
H without cab

**E**

Reacciones en servicio  
Reacciones fuera de servicio  
Sin carga, sin lastre, (ni tren de transporte), flecha y altura máxima.  
H sin cabina

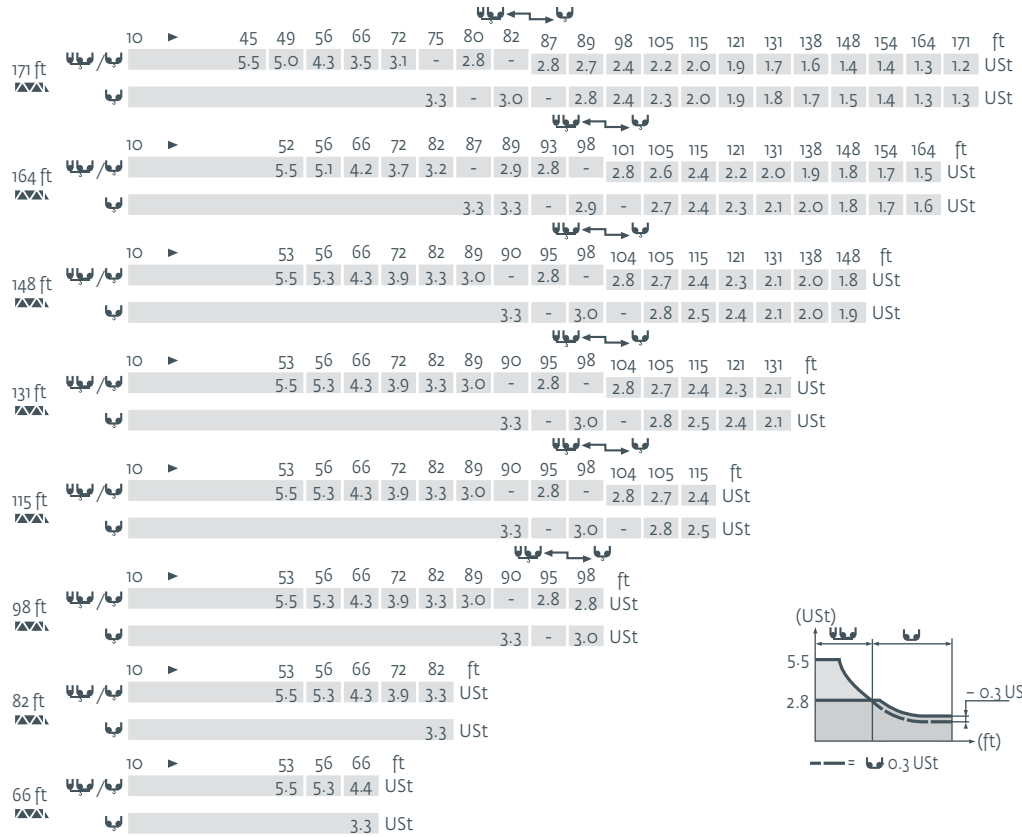
**I**

Reazioni in servizio  
Reazioni fuori servizio  
A vuoto, senza zavorra (ne assali di trasporto) con braccio massimo e altezza massima.  
H senza cabina

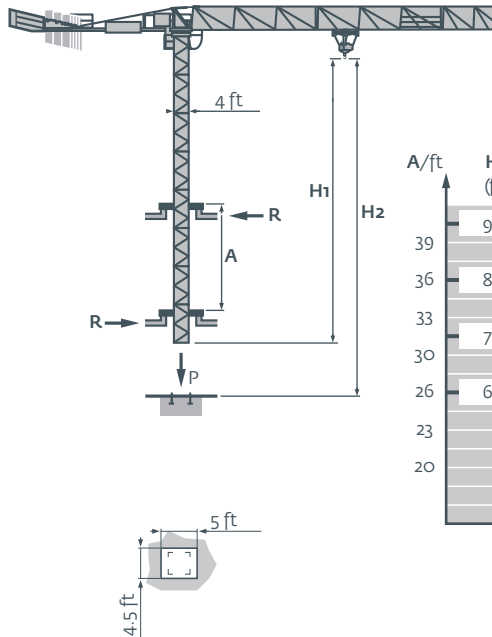
**P**

Reacções em serviço  
Reacções fora de serviço  
Sem carga (nem trem de transporte)- sem lastro com lança e altura máximas.  
H sem cabine

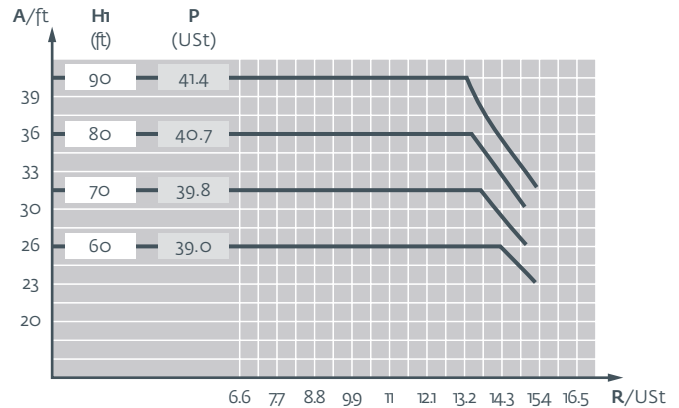
## Load diagrams



## Climbing crane



B 125 A












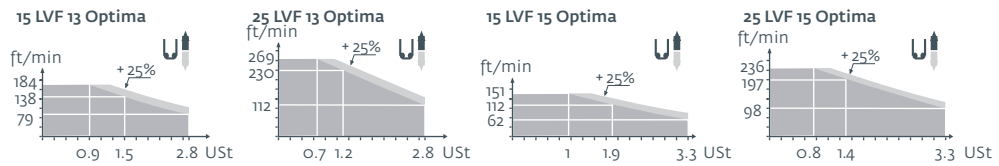
## City Topless MCT 88



Potain

	F	D	GB	E	I	P
<b>A</b>	Distance entre cadres	Abstand zwischen den Rahmen	Distance between collars	Distancia entra marcos	Distanza fra i telai	Distância entre quadros
<b>H1</b>	Hauteur grue	Kranhöhe	Crane height	Altura grúa	Altezza gru	Altura da grua
<b>P</b>	Poids de la grue (en service)	Krangewicht (in Betrieb)	Crane weight (in service)	Peso de la grúa (en servicio)	Peso della gru (in servizio)	Peso da grua (em serviço)
<b>R</b>	Réaction horizontale	Horizontalkräfte	Horizontal reaction	Reaccion horizontal	Reazione orizzontale	Reacção horizontal
	Voir télescope sur	Siehe Kletterkrane im				

## Mechanisms

													ch - PS hp	kW			
	15 LVF 13 Optima	ft/min USt	9 → 25 → 79 → 138 → 184						5 → 12 → 40 → 69 → 92						15	11	656 ft
	25 LVF 13 Optima	ft/min USt	13 → 36 → 112 → 184 → 230 → 269						7 → 20 → 56 → 92 → 115 → 135						25	18	1,079 ft
	15 LVF 15 Optima	ft/min USt	7.5 → 20 → 62 → 112 → 151												15	11	522 ft
	25 LVF 15 Optima	ft/min USt	12 → 31 → 98 → 157 → 197 → 236												25	18	748 ft
	RVF 61 Optima +	tr/min U/min-rpm	o → 0,8										7,5	5,5			
	4 DVF 3	ft/min	o → 207										5	3,7			
	ZC 2030 RT 224	ft/min	82										2 x 4	2 x 2,9			
	ZC 4230 ZD 2030 RT 324	ft/min	41 - 82										2 x 7	2 x 5,2			
CEI 38 			IEC 38					kVA									
400V (+6% -10%) 50 Hz								15 LVF: 25 kVA 25 LVF: 35 kVA									



	<b>F</b>	<b>D</b>	<b>GB</b>	<b>E</b>	<b>I</b>	<b>P</b>
	Levage	Heben	Hoisting	Elevación	Sollevamento	Elevação
	Distribution	Katzfahren	Trolleying	Distribución	Distribuzione	Distribuição
	Orientation	Schwenken	Slewing	Orientación	Rotazione	Rotação
	Translation	Kranfahren	Travelling	Traslación	Traslazione	Translação

