

Igo **MA13**



**product
guide**



features

- 3,968 lb. maximum capacity
- 72'-2" maximum operating hook radius
- 68'-3" maximum hook height with jib set at 20 degrees
- 52'-6" maximum hook height with jib horizontal
- Manitowoc CraneCare comprehensive support

contents

**Outline
Dimensions**

2

**Outline
Dimensions**

3

**Rated Load
Charts
Mechanical Data**

4

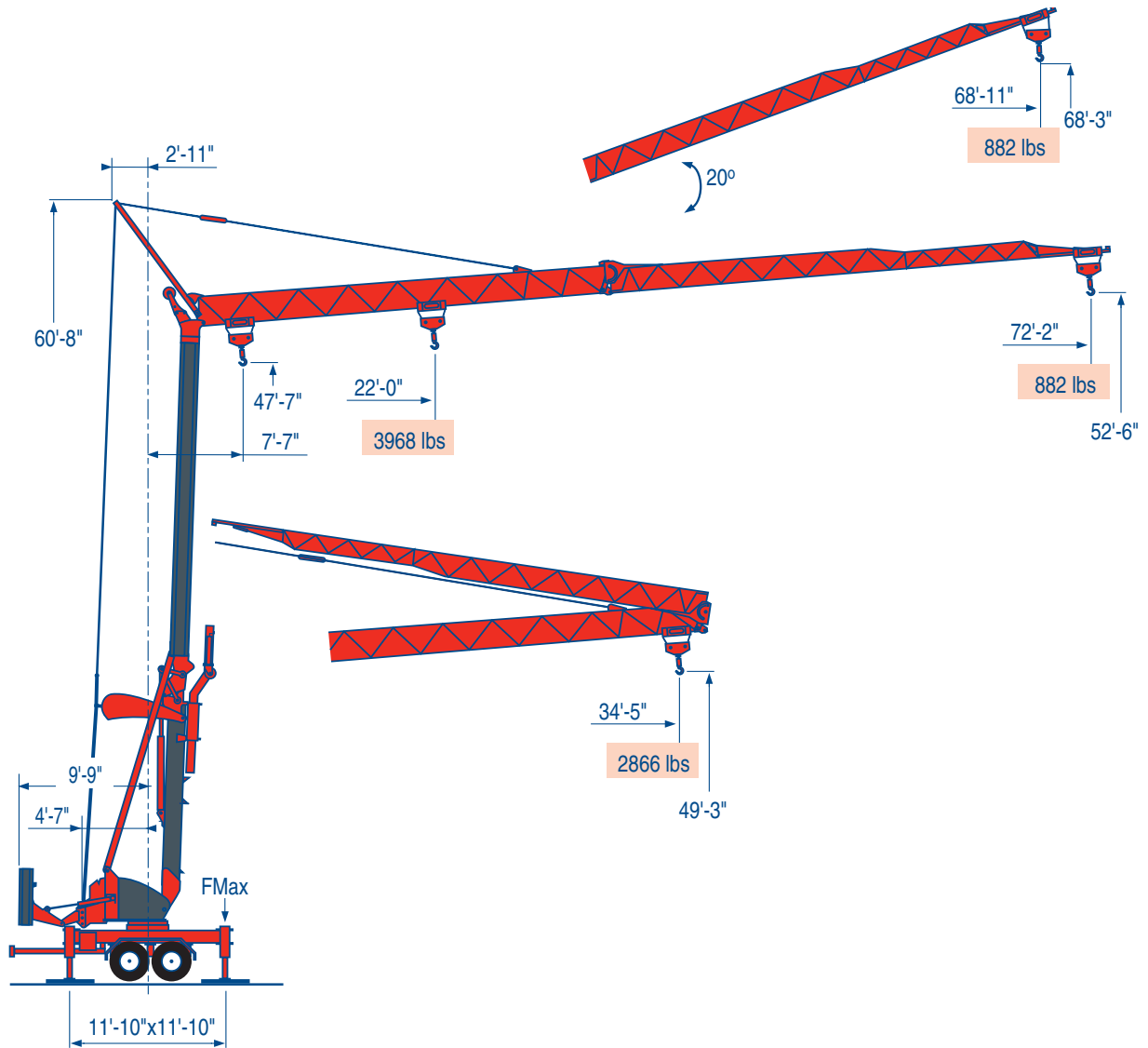
CraneCare

5

*Product may be shown with optional equipment.

**Conforms to
ANSI B 30.5**

outline dimensions



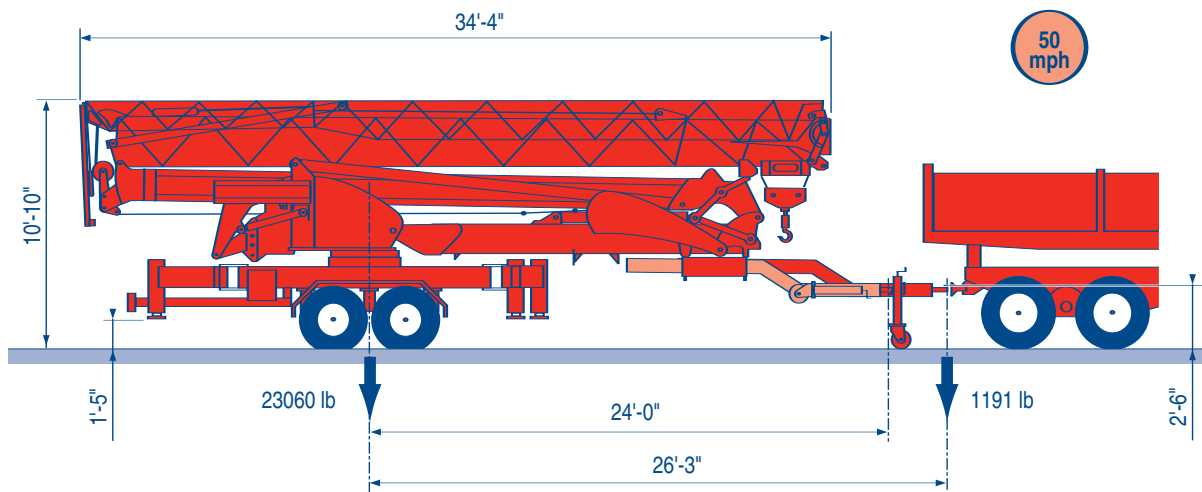
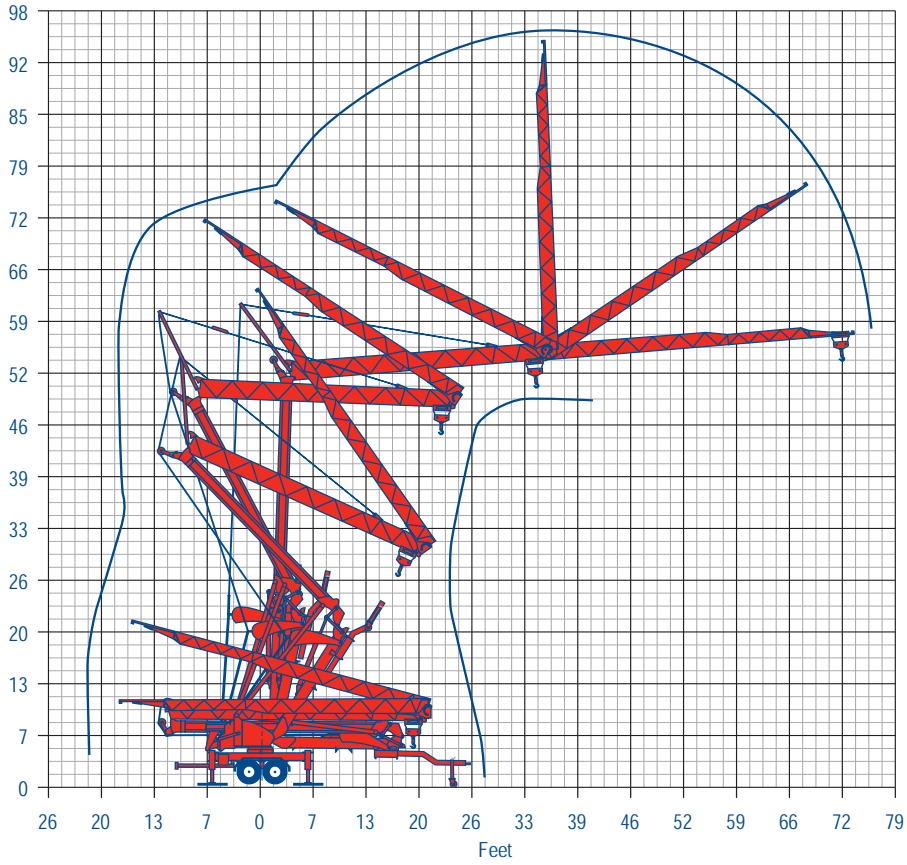
MA13 Machine weight: 24,251 lbs.*

*Without load

In Service	Out of Service
FMax: 18,519 lbs.	11,464 lbs.

Igo MA13

outline dimensions



Width in travel mode: 8'-3"

Igo MA13

rated load charts

Jib Configuration: L22 with maximum hook reach of 72'-2" set at horizontal

Hook Reach	7'-7"	22'-0"	23'-0"	26'-3"	29'-6"	32'-10"	36'-1"	39'-4"	42'-8"	45'-11"	49'-3"	52'-6"	55'-9"	59'-1"	62'-4"	65'-7"	68'-11"	72'-2"
Trolley	Capacities (lbs)																	
2-Part	3,968	3,968	3,765	3,179	2,745	2,405	2,136	1,918	1,735	1,581	1,451	1,336	1,237	1,149	1,071	1,001	939	882

Maximum Hook Height at Jib Tip: H = 52'-6"
Maximum Hook Height at Jib Foot: H = 47'-7"

Jib Configuration: L22 with maximum hook reach of 34'-5" set at horizontal

Hook Reach	7'-7"	26'-7"	29'-6"	32'-10"	34'-5"
Trolley	Capacities (lbs)				
2-Part	3,968	3,968	3,461	3,042	2,866

Maximum Hook Height at Jib Tip: H = 49'-6"
Maximum Hook Height at Jib Foot: H = 47'-7"

Jib Configuration: L22 with maximum hook reach of 68'-11" set at 20 degrees

Hook Reach	7'-7"	68'-11"
Trolley	Capacities (lbs)	
2-Part	882	882

Maximum Hook Height at Jib Tip: H = 68'-3"
Maximum Hook Height at Jib Foot: H = 47'-7"

mechanical data

Igo MA13

Function	Hoist Type	Hoist Type	Speed vs Weight	2-part			Motor (hp)	Motor (kW)
				1st Speed	2nd Speed	3rd Speed		
Hoist	8 LVF 9 Optima	220 V 26 A single phase	ft/min lbs	↑ 11 ↓ 11 3,968	↑ 23 ↓ 52 3,968	↑ 59 ↓ 118 1,543	3.9	2.9
		220 V 41 A single phase	ft/min lbs	↑ 11 ↓ 11 3,968	↑ 36 ↓ 52 3,968	↑ 82 ↓ 118 1,543	6.1	4.6
		480 V	ft/min lbs	11 3,968	52 3,968	118 1,543	8.9	6.6
Trolley	1 DVF 4		ft/min	46 to 92			1.8	1.3
Swing	RVF 20		rpm	0 to 1.0			1.8	1.3

Power Requirements: 220 V (+6% or -10%) 60 Hz measured at turn table.

Amperage: 2.9 kW: 26 Amp (single phase)

Amperage: 4.6 kW: 41 Amp (single phase)

Power Requirements: 480 V (+6% or -10%) 60 Hz measured at turn table.

Amperage: 8 LVF 9: 17 Amp (3 phase service with ground)

Igo MA13

CraneCARE

CraneCARE is Manitowoc Crane Group's complete service and support program. Incorporated into this program are service training, immediate parts availability, professional field service, and technical support and documentation. CraneCARE is available for every one of the thousands of cranes operating all over the world.

That's dedication and devotion that you won't get anywhere else.

That's **CraneCARE**.

Service Training

A certified Potain service specialist works with you in your training facility or in the field to ensure that you know how to achieve maximum performance, dependability, and years from your cranes.

Parts Availability

Genuine Potain replacement parts may be obtained through your MCG distributor on a regular basis.

Field Service

Factory-trained service experts are always ready to help maintain your crane's peak performance.

For a worldwide listing of dealer locations, please consult our website at:
www.manitowoccranegroup.com.

Technical Support

Potain's dealer network and factory personnel are available 24 hours a day, 7 days a week, 365 days a year to answer your technical questions and more.

For a worldwide listing of dealer locations, please consult our website at:
www.manitowoccranegroup.com.

Technical Documentation

Potain boasts an extensive, easy-to-understand library of documentation.

A complete set of Operator's parts and service manuals are included with each crane.

Additional copies are available through your Authorized Potain Distributor.

Regional Headquarters

Americas

Manitowoc, Wisconsin, USA

Tel: +1 920 684 6621
Fax: +1 920 683 6278

Shady Grove, Pennsylvania, USA

Tel: +1 717 597 8121
Fax: +1 717 597 4062

Regional Offices

Americas

Brazil

Alphaville

Tel: +55 11 4688 2716
Fax: +55 11 4191 1471

Mexico

Monterrey

Tel: +52 81 8124 0128
Fax: +52 81 8124 0129

Europe, Middle East, Africa

Algeria

Hydra

Tel: +21 3 21 48 1173
Fax: +21 3 21 48 1454

Czech Republic

Netvorice

Tel: +420 317 78 9313
Fax: +420 317 78 9314

France

Baudemont

Tel: +33 385 28 2589
Fax: +33 385 28 0430

Cergy

Tel: +33 130 31 3150
Fax: +33 130 38 6085

Decines

Tel: +33 472 81 5000
Fax: +33 472 81 5010

Germany

Langenfeld

Tel: +49 21 73 8909-0
Fax: +49 21 73 8909 30

Hungary

Budapest

Tel: +36 13 39 8622
Fax: +36 13 39 8622

Italy

Parabiago

Tel: +390 331 49 3311
Fax: +390 331 49 3330

Europe, Middle East, Africa

Ecully, France

Tel: +33 472 18 2020
Fax: +33 472 18 2000

Netherlands

Breda

Tel: +31 76 578 3999
Fax: +31 76 578 3978

Poland

Warsaw

Tel: +48 22 843 3824
Fax: +48 22 843 3471

Portugal

Alfena

Tel: +351 229 69 8840
Fax: +351 229 69 8848

Lisbon

Tel: +351 212 109 340
Fax: +351 212 109 349

Russia

Moscow

Tel: +7 495 641 2359
Fax: +7 495 641 2358

U.A.E.

Dubai

Tel: +971 4 3381 861
Fax: +971 4 3382 343

U. K.

Middlesex

Tel: +44 1 895 43 0053
Fax: +44 1 895 45 9500

Sunderland

Tel: +44 191 522 2000
Fax: +44 191 522 2052

Asia - Pacific

Australia

Melbourne

Tel: +61 3 9 336 1300
Fax: +61 3 9 336 1322

Sydney

Tel: +61 2 9 896 4433
Fax: +61 2 9 896 3122

Asia - Pacific

Shanghai, China

Tel: +86 21 51113579
Fax: +86 21 51113578

Singapore

Tel: +65 6264 1188
Fax: +65 6862 4142

China

Beijing

Tel: +86 10 58674761
Fax: +86 10 58674760

Xi'an

Tel: +86 29 87891465
Fax: +86 29 87884504

Korea

Seoul

Tel: +82 2 3439 0400
Fax: +82 2 3439 0405

Philippines

Makati City

Tel: +63 2 844 9437
Fax: +63 2 844 4712

Factories

U.S.A.

Manitowoc
Shady Grove

Brazil

Alphaville

France

Charlieu
La Clayette
Moulines

India

Calcutta
Puna

Italy

Niella Tanaro

Germany

Wilhelmshaven

Portugal

Fânzeres

China

Zhangjiagang